

From: Murray Willis <murray@australianopalmines.com>
Date: September 28, 2010 1:24:34 AM EDT
To: Murray WILLIS <Murray@australianopalmines.com>
Subject: Assortment R0ugh Opal Parcels OFFER 28 Sep 2010

Hi everyone

Today we have an assortment of rough parcels, something for everyone.

The Lambina Black \$1,250/oz .21oz IMG_1830 has beautiful greens with some blues. It is approximately 25mm x 14mm x 16mm thick and would make a super high domed ring stone for only \$262.

The Lambina Dark Base Super Gem Bar IMG_3453 \$450/oz .78oz is approximately 30mm x 35mm x 14mm thick. There are 3 bars in this outstanding stone which you should be able to cut into at least 3 stones for just the small price of \$351.

SPECIALS

- 9. \$127.50 IMG_4820 SPECIAL Lambina Black \$850/oz .15oz - REDUCED FROM \$1,000/OZ
- 20. \$320 IMG_4815 SPECIAL Andamooka .321oz
- 31. \$1,610 IMG_4849 SPECIAL Coober Pedy 17 Mile Black \$700/oz 2.3oz - REDUCED FROM \$800/OZ

We thank you for shopping with us and hope you have enjoyed our Offer. We look forward to hearing from you.

Regards

Murray

- 1. \$40 IMG_4042 Squid Blue Green part will face beautifully 20mm x 10mm 12.21cts
- 2. \$96 IMG_0705.JPG Hans Peak Reds & Greens smaller stones (21) \$75/oz 1.28oz
- 3. \$100 IMG_1827 Lambina Blue Pendant stone \$1,000/oz .1oz - (30x8x9mm thick) also has a gem green bar that will face beautifully (side 1)
- 4. \$100 IMG_9966.JPG International Field Dark Base 1oz
- 5. \$102 IMG_4830 Opal Valley Dark Base \$100/oz 1.02oz
- 6. \$120 IMG_4868 Opal Valley Dark Base \$40/oz 3oz
- 7. \$120 IMG_4843 White Base Reds & Greens \$60/oz 2oz
- 8. \$125 IMG_4822 Boulder .697oz
- 9. \$127.50 IMG_4820 SPECIAL Lambina Black \$850/oz .15oz
- 10. \$133 IMG_0038 Gem Greens & Golds \$950/oz .14oz
- 11. \$145 IMG_4824 Boulder 1.05oz
- 12. \$165 each IMG_4809 Boulders (2) .87oz
- 13. \$200 IMG_4847 Mixed Small Stones \$250/oz .8oz

14. \$200 Bak.247 Boulder Gem Orange Opal (0.247oz)
15. \$225 IMG_0018 Opalised "Squid" Belemnite 28.29cts
16. \$225 IMG_4811 Boulder .352oz
17. \$259 IMG_1047 Olympic Dark Base \$35/oz 7.4oz
18. \$262 IMG_1830 Lambina Black \$1,250/oz .21oz
19. \$300 IMG_0029 Inlay \$600/oz .5oz
20. \$320 IMG_4815 SPECIAL Andamooka .321oz
21. \$351 IMG_3453 Lambina Dark Base Super Gem Bar \$450/oz .78oz
22. \$361.80 IMG_0021 Lambina Dark \$1,800/oz .201oz
23. \$436 IMG_9711 Lambina Mixed Reds & Greens 1.09oz \$400/oz
24. \$468 IMG_0012 Queensland Seam Opal .52oz \$900/oz
25. \$528 IMG_2624 Mintubi Crystal Gems \$3,000/oz .176oz
26. \$536 IMG_3434 BARGAIN Lambina "kingstone" of the parcel \$800/oz .67oz (45x30x9-12mm thick) "skin to skin"
27. \$644 IMG_1808 Shell Patch \$1,800/oz .358oz - I have another 10oz or so, stones up to .97oz
- 28-29. \$707 IMG_4058.JPG Olympic Gem Bar on Jelly \$1,000/oz .707oz
30. \$834 IMG_0031 Lambina Dark \$1,200/oz .695oz
31. \$1,610 IMG_4849 SPECIAL Coober Pedy 17 Mile Black \$700/oz 2.3oz
32. \$1,800 IMG_2630 Mintubi Red & Green Crystals \$3,000/oz .6oz
33. \$1,968 IMG_4859 Mintubi \$3,000/oz .656oz



1. \$40 IMG_4042 Squid Blue Green part will face beautifully 20mm x 10mm 12.21cts



2. \$96 IMG_0705.JPG Hans Peak Reds & Greens smaller stones (21)
\$75/oz 1.28oz



3. \$100 IMG_1827 Lambina Blue Pendant stone \$1,000/oz .1oz -
(30x8x9mm thick) also has a gem green bar that will face beautifully (side 1)



4. \$100 IMG_9966.JPG International Field Dark Base 1oz



5. \$102 IMG_4830 Opal Valley Dark Base \$100/oz 1.02oz



6. \$120 IMG_4868 Opal Valley Dark Base \$40/oz 3oz



7. \$120 IMG_4843 White Base Reds & Greens \$60/oz 2oz



8. \$125 IMG_4822 Boulder .697oz



9. \$127.50 IMG_4820 SPECIAL Lambina Black \$850/oz .15oz



10. \$133 IMG_0038 Gem Greens & Golds \$950/oz .14oz



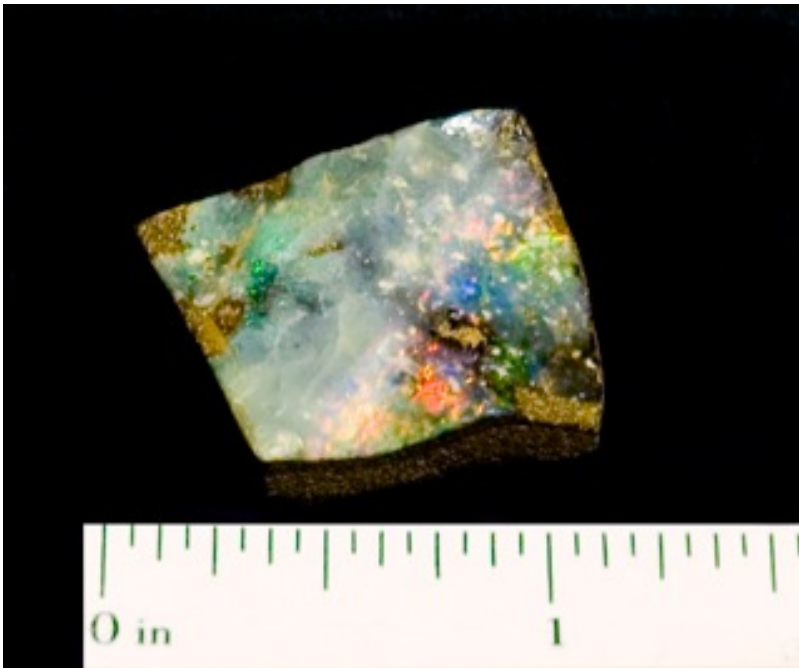
11. \$145 IMG_4824 Boulder 1.05oz



12. \$165 each IMG_4809 Boulders (2) .87oz



13. \$200 IMG_4847 Mixed Small Stones \$250/oz .8oz



14. \$200 Bak.247 Boulder Gem Orange Opal (0.247oz)



15. \$225 IMG_0018 Opalised "Squid" Belemnite 28.29cts



16. \$225 IMG_4811 Boulder .352oz



17. \$259 IMG_1047 Olympic Dark Base \$35/oz 7.4oz



18. \$262 IMG_1830 Lambina Black \$1,250/oz .21oz



19. \$300 IMG_0029 Inlay \$600/oz .5oz



20. \$320 IMG_4815 SPECIAL Andamooka .321oz



21. \$351 IMG_3453 Lambina Dark Base Super Gem Bar \$450/oz .78oz



22. \$361.80 IMG_0021 Lambina Dark \$1,800/oz .201oz



23. \$436 IMG_9711 Lambina Mixed Reds & Greens 1.09oz \$400/oz



24. \$468 IMG_0012 Queensland Seam Opal .52oz \$900/oz



25. \$528 IMG_2624 Mintubi Crystal Gems \$3,000/oz .176oz



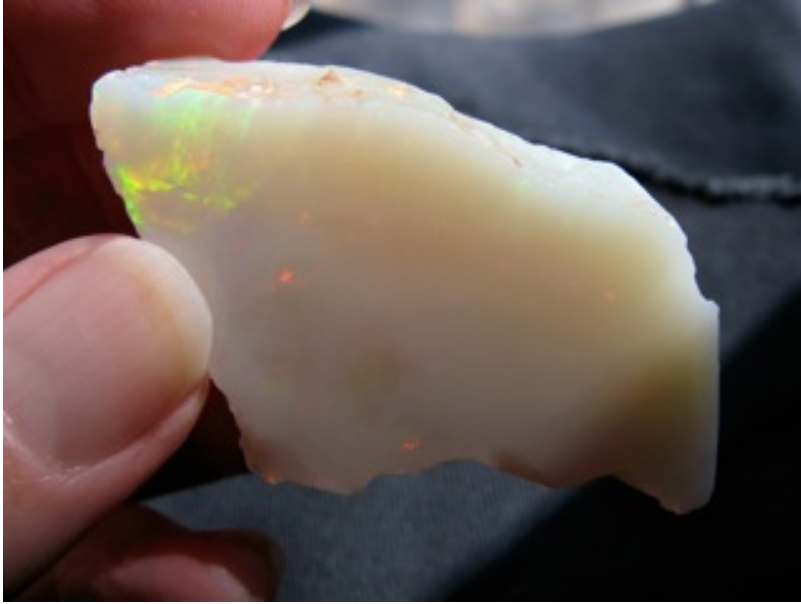
26. \$536 IMG_3434 BARGAIN Lambina "kingstone" of the parcel \$800/oz .67oz (45x30x9-12mm thick) "skin to skin"



27. \$644 IMG_1808 Shell Patch \$1,800/oz .358oz - I have another 10oz or so, stones up to .97oz



28. \$707 IMG_4058.JPG Olympic Gem Bar on Jelly \$1,000/oz .707oz



29. \$707 IMG_4067.JPG Olympic Gem Bar on Jelly \$1,000/oz .707oz



30. \$834 IMG_0031 Lambina Dark \$1,200/oz .695oz



31. \$1,610 IMG_4849 SPECIAL Coober Pedy 17 Mile Black \$700/oz
2.3oz



32. \$1,800 IMG_2630 Mintubi Red & Green Crystals \$3,000/oz .6oz



33. \$1,968 IMG_4859 Mintubi \$3,000/oz .656oz

Kind regards

Murray Willis

Murray@AustralianOpalMines.com

<http://www.austopalmines.net.au>

Ph 011 -618 -83324049 Fax 011- 618 - 83329631

To UNSUBSCRIBE, send us an email with the subject: UNSUBSCRIBE